

HOUSE LAYOUTS

VOLUME 5/ ISSUE 1

FUNCTIONAL ELEGANCE IN INTERIORS

Rs.50/-

Visit us at <http://www.houselayouts.com>

Intelligent
BUILDING
Sandeep Shah

Profile
Rajesh Patel

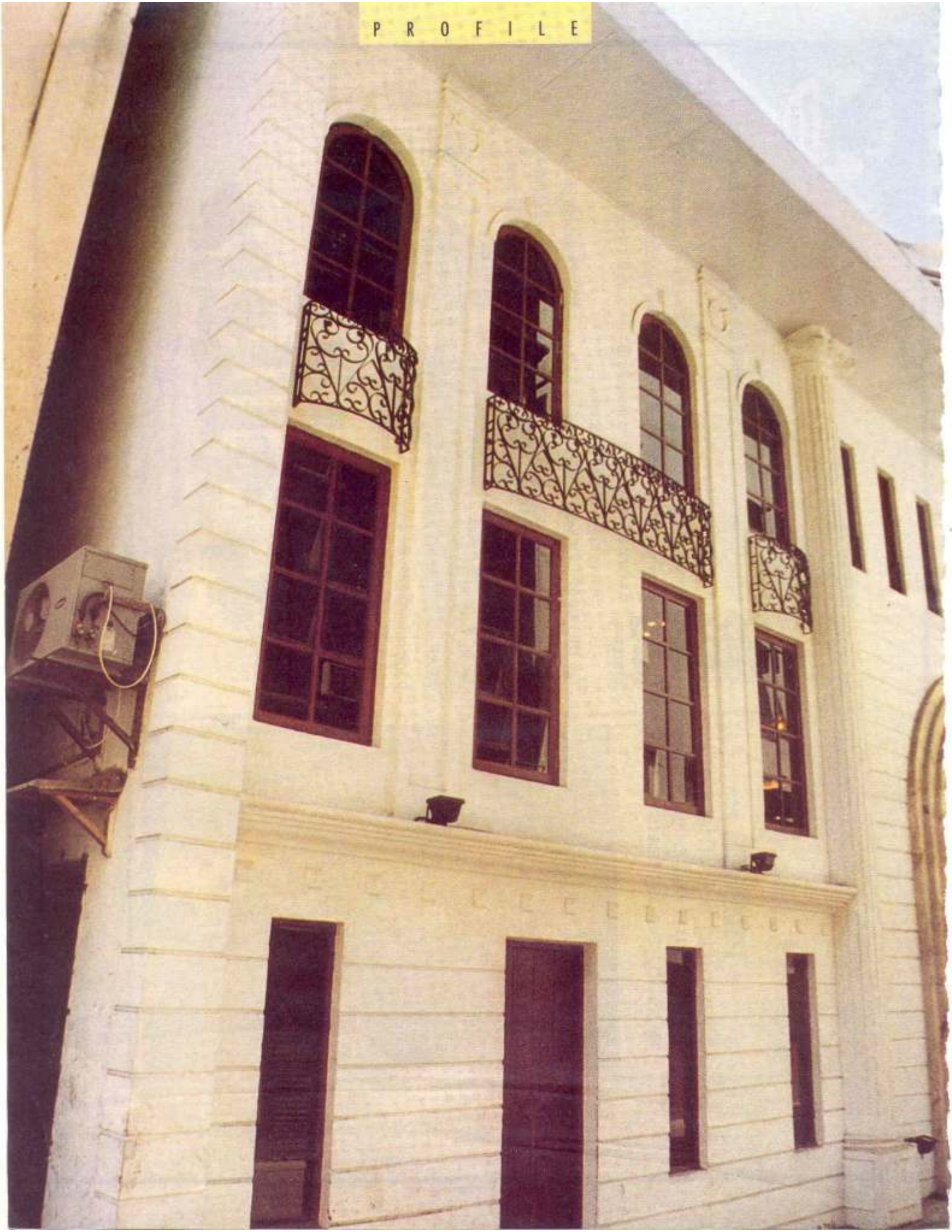
Vastu and
Feng Shui

ESSENTIALLY DIFFERENT !

floorings
& wall finishes

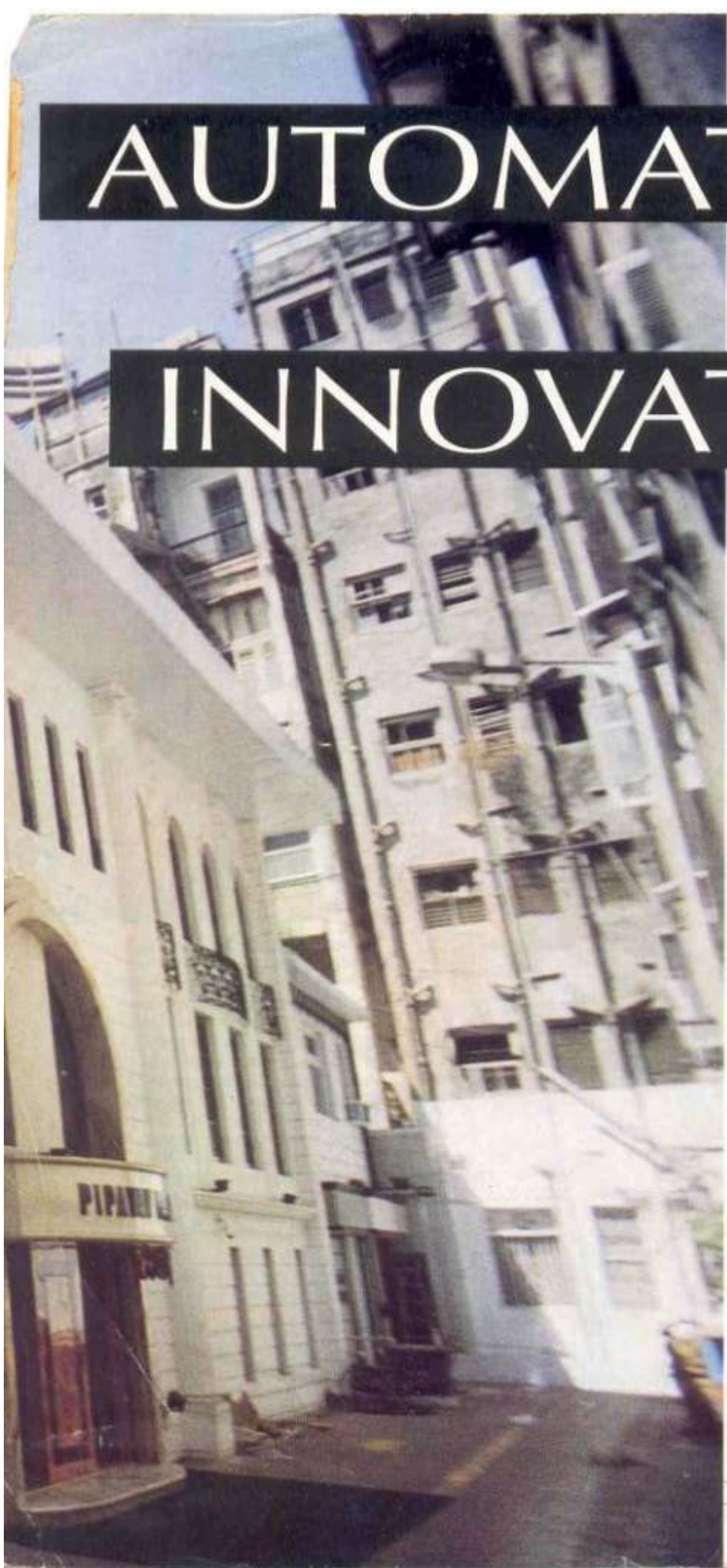
5TH ANNIVERSARY ISSUE

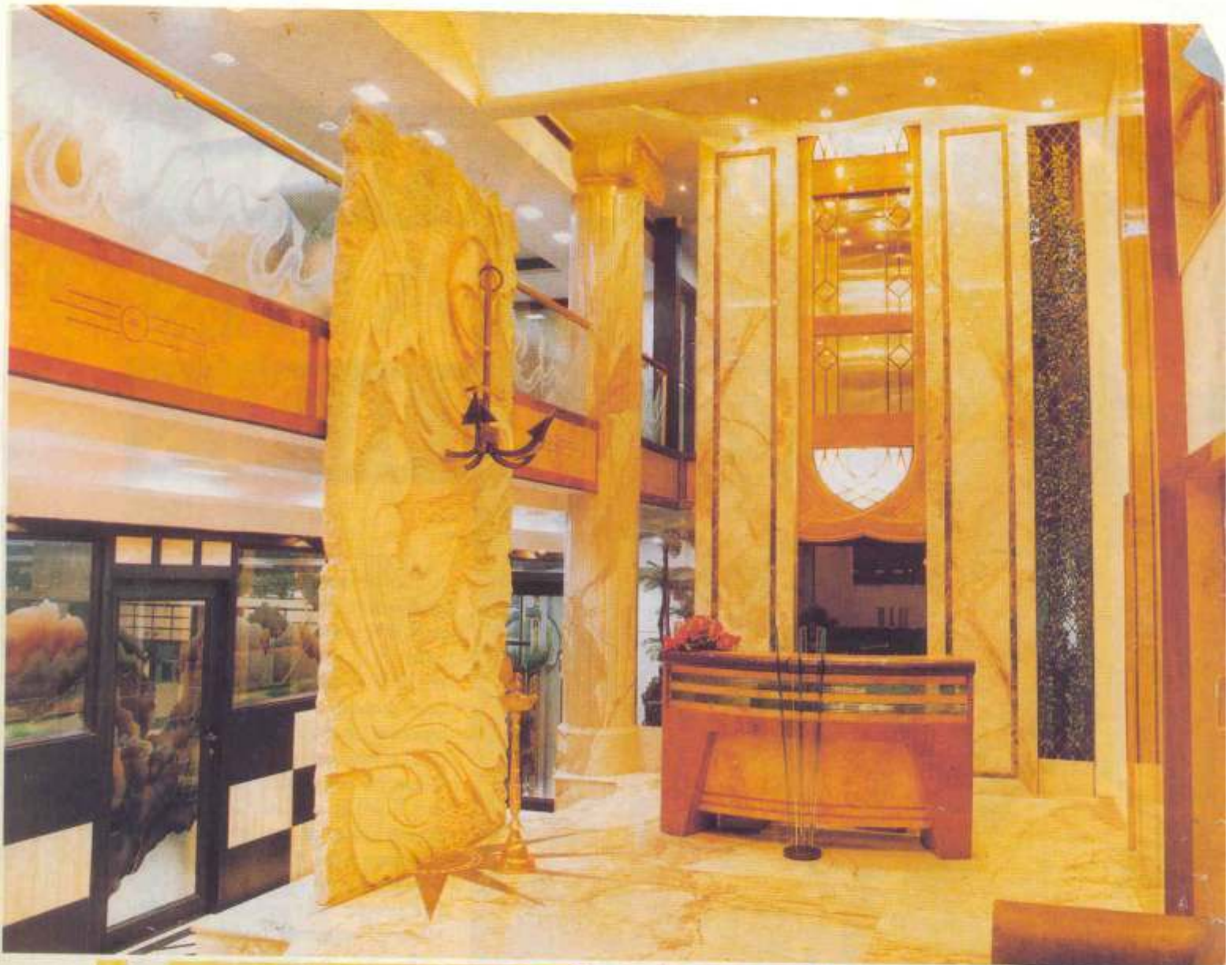
P R O F I L E



AUTOMAT

INNOVAT





ABOVE: Reception area with the view of the glass lift. Flooring is made of Italian marble with inlays of Brava aurora while the brown emporador Siporax 12' x 6' mural is by E.A. Kitabi. The partition overlooking the reception, on the first floor has etched glass with brass railings. A 20' high hydraulic capsule lift situated behind the reception counter is supported by Italian marble panelling on both sides. The two-seater glass and veneered reception table has Philips Public address systems and phones. The column towards the further end is covered with wood. Entry to the staff area is through the air brushed glass door



LEFT: Waiting area : Painting by Anil Gudigar adorns the main wall and complements the Siporax mural. Next to it stands the steel column encased in wood resembling the Roman pillar with capitals (as seen in the facade)



The visual difference and an altered ambience are introduced through varying colour palettes for each floor. On the rear side are arranged utilities like pantry, photocopy / fax room, toilets, Air Handling Unit (AHU) and lunch rooms. Glass panel partitions divide the Director's and Manager's cabins from the general staff area. Internally, each executive cabin is designed after carefully understanding the kind and flow of work, visitors entertained and job profiles in that strata.

Details of the ceiling of the waiting/reception area as seen in daylight.

Looking out through the entrance door showing details of the stained glass. The arch is pushed to continue outside into the facade. The vaulted ceiling above has indirect lights that add grandeur.

capacity of 125 people. Of the four sides of the building, two are in contact with the walls of the adjacent building, while the third is at a distance of 2'6" from the neighbouring building, thereby making only the front facade of the building visible. As the building lies in the jurisdiction of the heritage zone, demolishing it was out of the question. Consequently, repairs were numerous and a new front elevation was redesigned to give it a simple yet a majestic corporate look.

As the original profile of the building had to be retained, it was not possible to take the elevator to the third floor — this formed a very

crucial factor in space planning. In terms of general planning, the ground and the first floor include general administration areas, while the second has the Chairman's office and the third, the Accounts section. This kind of planning was to ensure higher level of privacy and inter and intra hierarchical level interaction. Every floor has a conference room and a lunch area.

Each floor maintains its own identity, though the planning and design is uniform. For instance, the general layout of the ground, first and third floors are similar, with peripheral Director and Manager cabins and a central open staff area.





ABOVE: Glass ceiling from the first floor behind the mural

RIGHT: Staff area - This plan is repeated on the ground, first and third floors. It shows an open plan with executive cabins along the periphery. Each station has Blowplast modular furniture with laminated surfaces to co-ordinate with the furniture done on site like the storage areas around the sides which have black and white chequered design. Natural look is maintained by the artificial plants placed on dividers. Lighting is a combination of indirect white light and direct PL lights fitted with electronic ballast for lower power consumption. Smoke detectors and sprinklers can be seen on gypsum boards on the ceiling

The second floor — the Executive floor — contains the Senior Director's office, a Chairman's Chamber, a large conference room, library, a 'Think Tank' area (senior staff cubicals) and the visitor's lounge, besides the utility area.

In terms of appearance, the designer's brief called for interiors reflecting an international character, with a subtle touch of what the business was all about. This meant a lavish use of glass, wood and marble as the prime media for the aesthetic expression of interior design. Colour combination for the ground, first and second are maintained cream and brown (in the marbles, tiles veneer and laminate) with ivory walls and white ceilings. To maintain the stylish air, the areas

are supplemented with extensive use of different types of glass — plain, colour stained, etched, deep etched, sandwiched plain, chipped fused, bent fused, air brushed and engraved. Textured paint and wall papers with textured effect have also been widely used in cabins and open areas. Siporax and copper murals along with a collection of paintings adorn the walls. Three kinds of leather and thirty two co-ordinated upholstery fabrics have been used in the chairs, sofas, softboards, partitions in the staff area, etc.

To bring life to the otherwise serious accounts department, the design is conceived very differently, taking advantage of the sloping roof. The sloping roof is insulated to reduce heat transfer and then



P R O F I L E



painted black to give set off the white space frame. The ceiling is a combination of exposed ducts, space frames, trusses, "I" beams and stanchions while the flooring has blue and black pattern. Furniture upholstery and glass have a combination of blue, yellow and red.

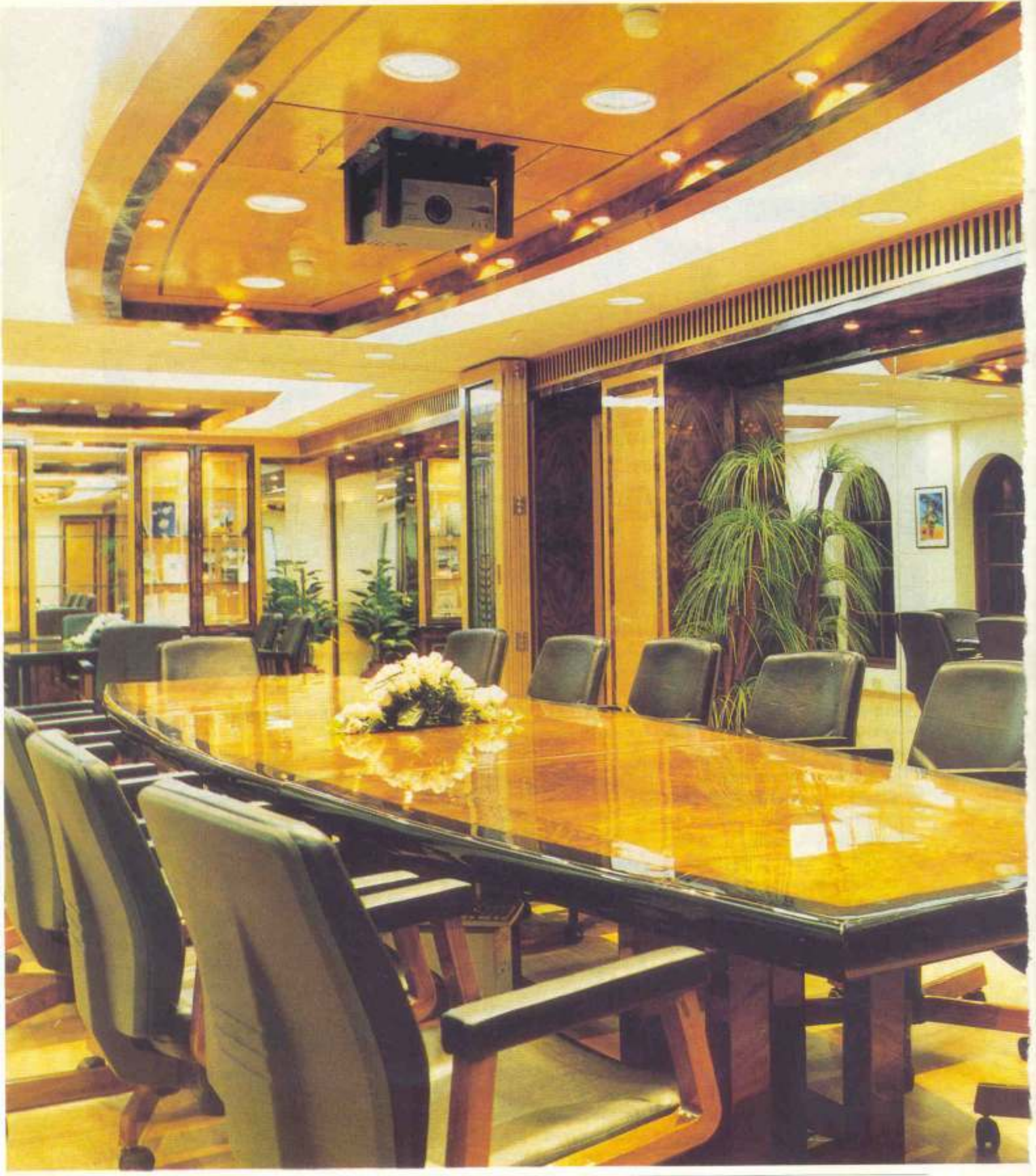
Included in the basically open plan are the fully computerised closets on every floor to monitor the environment within. A few who have visited call this an 'Intelligent office Building' since it has an environment controlled by computers and other machines within the set parameters — an environment which does not

BELOW: Passageway with managerial cabins on the right. Flooring is a combination of mirror-polished and black granite tiles. POP ceiling is fitted with open PL lights, while the rounded cavities house yellow indirect lights



ABOVE: A glass block separates the Personal Assistant's room from the lounge. To the left is the door leading to the chairman's room. The chipped glass strips separates the Chairman's lobby from this area





www.111.com.cn



Second floor lounge : Indirect lighting, smoke alarms and sprinklers can be seen on the ceiling . The sides above the A/C grills have veneer finish. Mirrored walls add to the visual space. Flooring is Italian marble

need human interference for routine activities and yet assures high safety levels.

For instance, **Air conditioning** is by Carrier - France, **Fire detection** by Johnson Controls - USA and **control** by DA Engg. - India, **Electricals** by Sanyog Electricals - India, **Communication and information system** by Alcatel - France, **Public Address System** by Phillips - Holland and **Security System** by Memco - Dubai have all been integrated to attain the highest level of safety and also achieve an ambient working environment.

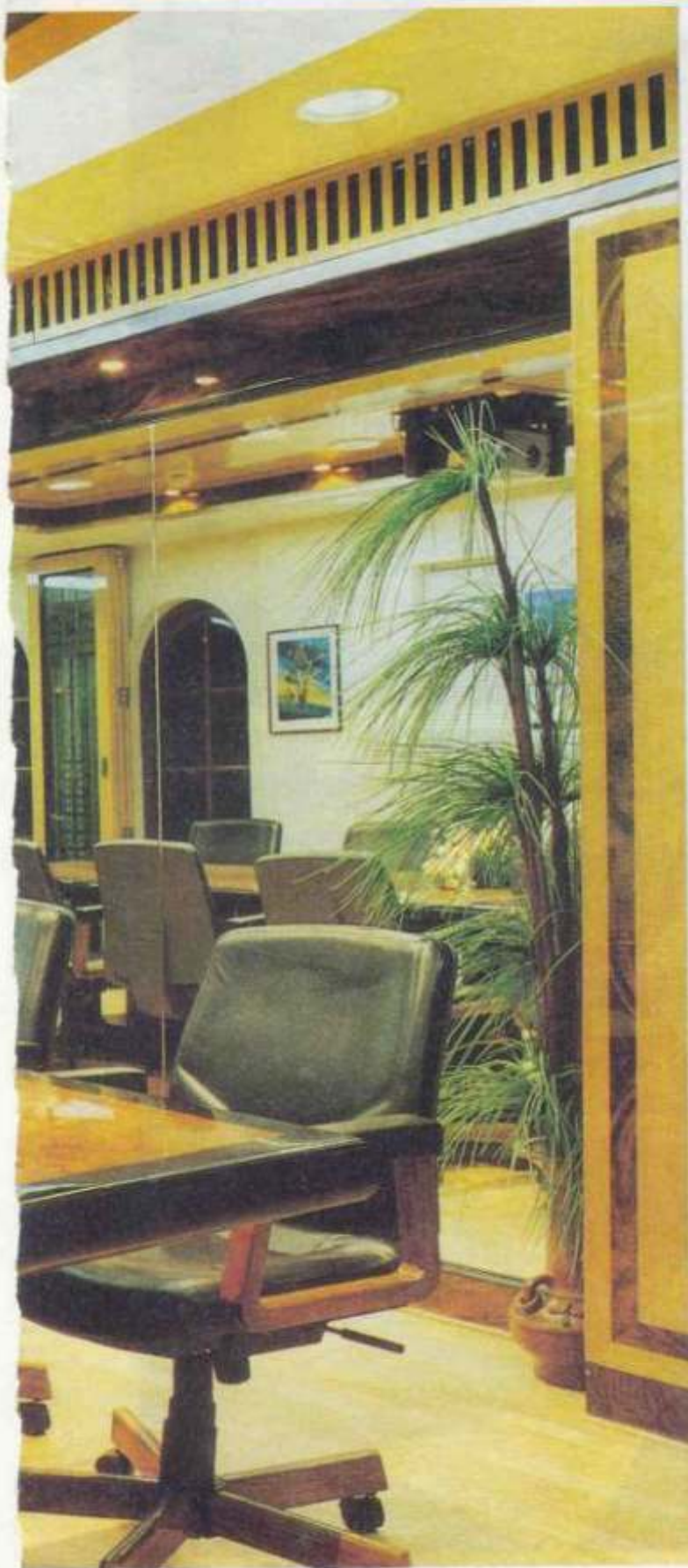
The 100 ton chiller plant was imported directly from Carrier - France (the AHU was built in India). The Air conditioning system requires each floor to have an AHU connected to the chiller plant which

in turn is connected to the expansion tank with sensors which regulate the air temperature at 23° C for return air and 21° C for supply air. 4 units of 25 tons each shut on and off depending on the load, thereby maintaining the same temperature at any point of time and saving energy in the process. In all rooms, the vents of the air conditioning ducts are provided with dampers which automatically close in case of fire, thereby restraining its spread to other areas through the duct.

All areas are provided with smoke detectors, water sprinklers on the ceiling in addition to a fire detection panel provided outside each cabin. In case of fire, the smoke detectors sense the temperature, alert the CPU which activates the sprinklers and closes the A.C dampers which in turn

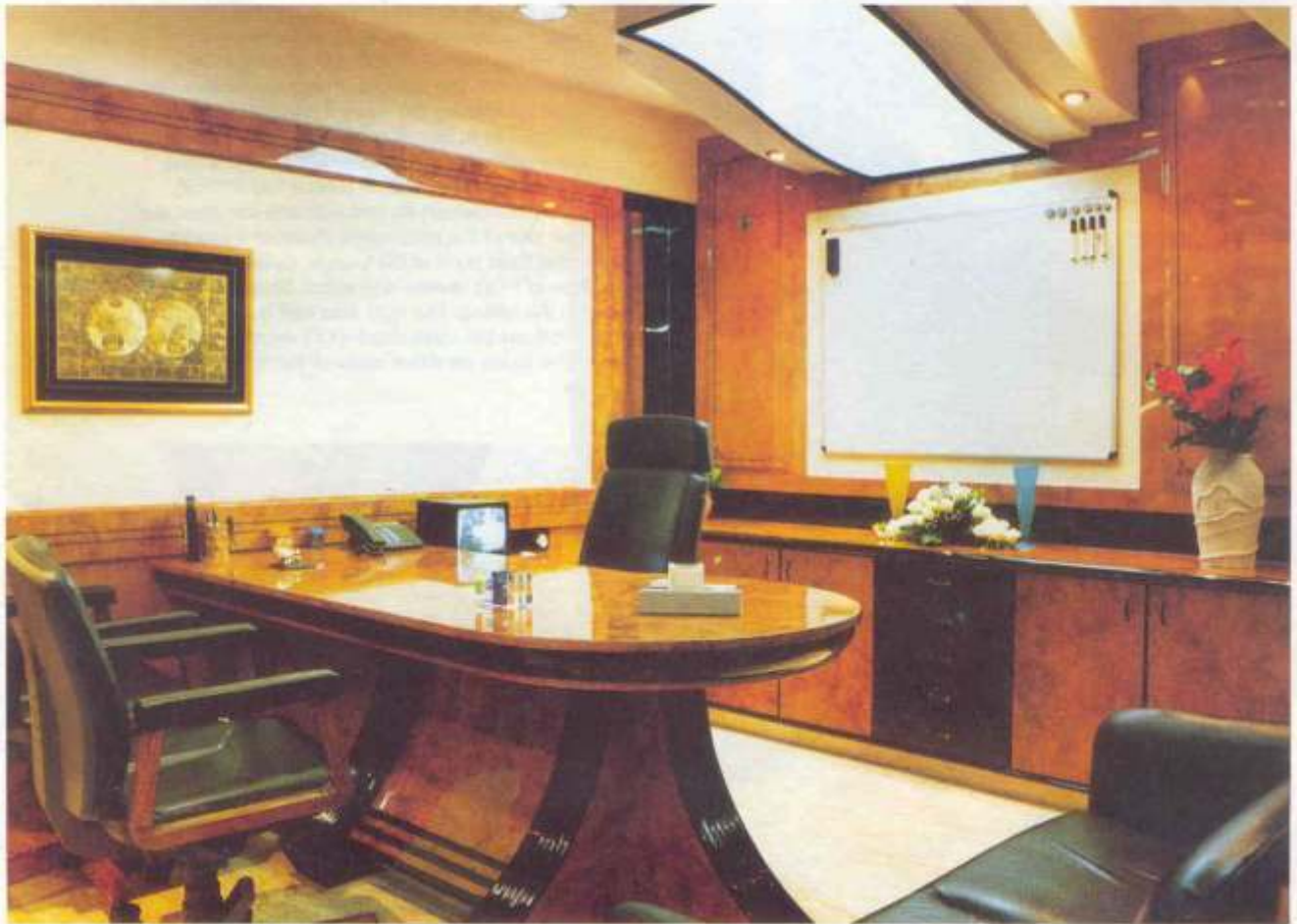
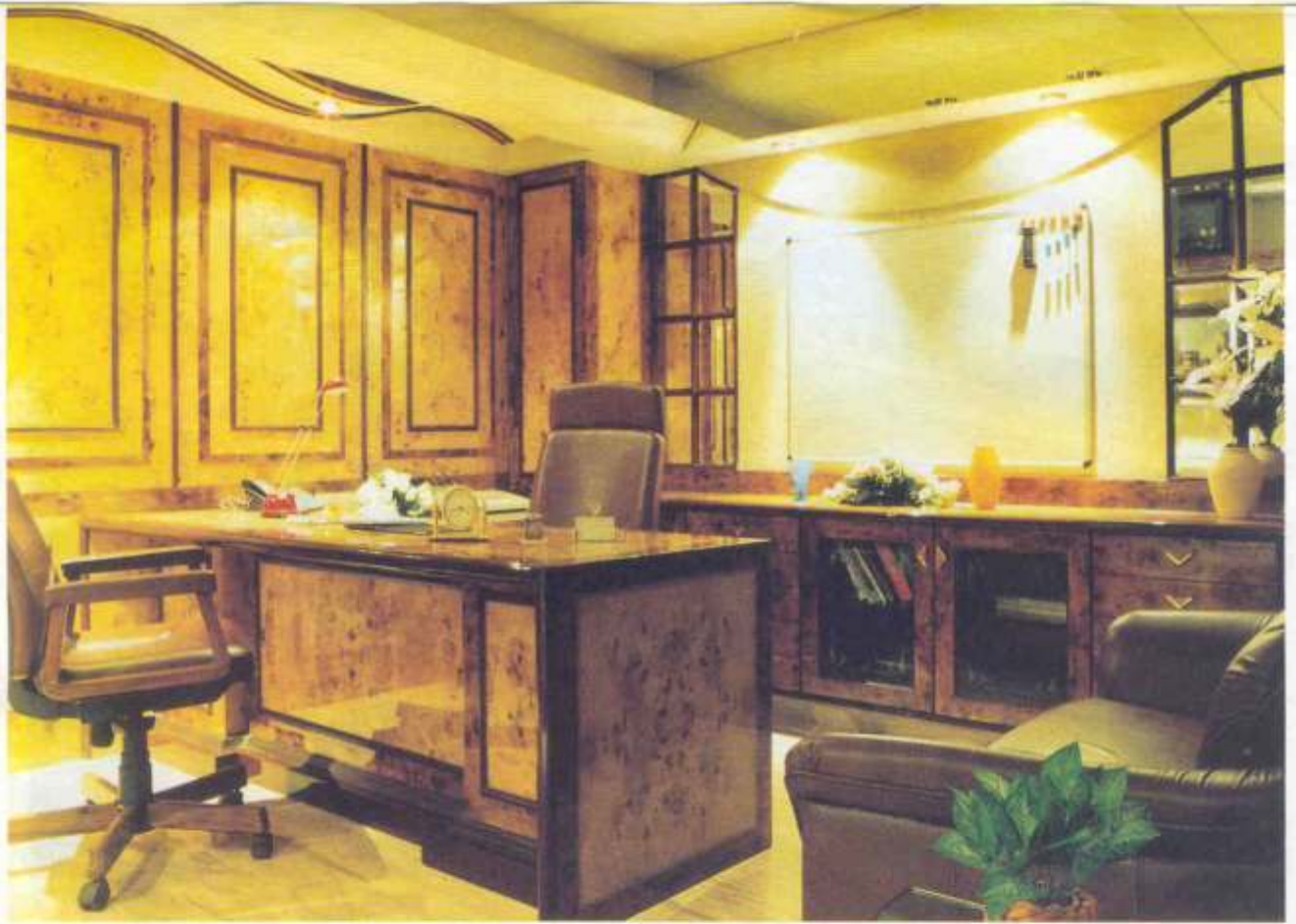
trips the AHU thereby switching off the A.C system. An alarm is automatically switched on in the premises and in addition to announcing a message through the Public address system, the computer and information system; the computer automatically dials four numbers over the telephone to inform the concerned people/ authorities about the event. The sensors also help monitor water level in an underground water tank and give a warning when the water level drops below the set point, giving enough time for the concerned authority to take action.

The security measures include programmable access cards to each staff member (each card can be programmed to open doors on one or more floors) thereby restricting



The conference room is equipped with state-of-art video conferencing equipment with a remote controlled screen and a ceiling mounted / concealed overhead projector attached to computers, VCR, CD, LD, and DVD for presentations (ABOVE). The conference and library can be combined by opening the stained glass partition door there by giving way to bigger conference facility or removing the tables to form a seminar hall with a dias (LEFT). A chipped glass partition (about 150 vertical glasses pressed together) on one side and the glass wall on the other side of the chairman's chamber entrance door form the focal point of the lounge. Ceiling is a combination of POP, veneer and wood. Shape of the table reflected in the ceiling. The right side wall is made of mirror to increase the room depth (12') visually; flooring is of Witex. The boxes on either sides of the mirror are used for storage





OPPOSITE PAGE:

TOP: Director's cabin No. 1: It has more of the panelling design on the partition but with modern overall visuals. Panelled veneer for walls co-ordinate with the furniture. Bevelled mirrors are put behind the Director's seat on either side

BOTTOM: Director's cabin No. 2: It has been done on a very contemporary and modern style which is indicated by the use of materials, shape of the table, ceiling and partition design. Ceiling is bent fusion glass lit from inside and the wall has textured paint

THIS PAGE:

BELOW: Director's cabin No. 3: It has a somewhat traditional Victorian style albeit with a contemporary touch. Wall finish in this cabin has veneer with wooden moulding on one third of the height of the wall, while the rest has wall paper. To the right is seen the fusion glass partition, which is shared by all the three Director's cabins

RIGHT: The POP fireplace and marble paint complete the Victorian look







ABOVE: Formal seating area with its stained glass door in the Chairman's Cabin. The wall in this area is a combination of marble and mirror

LEFT: Chairman's Cabin : Flooring is a combination of white Satvario Italian marble bordered with black Portro. The work area is demarcated by an elevated Witex Wooden section. Background has a world map etched on glass highlighting all the ports in the world. The Siporax mural completes the Executive touch

BELOW: Display cabinet on the left side of the Chairman's Cabin is of Italian marble - black Portro and white Satvario. Bent glass console and the Roman pillars complete the era look





ABOVE: Accounts department : Managers cabins on the right with the characteristic sign-off on the doors

RIGHT: Accounts department on the third floor with its staff area: Ceiling has space frames, exposed trusses and A/c ducts with modular tube lights. The roof is insulated to decrease heat transmission and reduce A/c load. Happy colours enhanced with white 150 Volts Halogen custom-made lights add a touch of brightness. A triangular mirror is added at the far end to increase depth

BELOW: Flooring has blue and black granite tiles



P R O F I L E





ABOVE: Inside the manager's cabin